



User Manual : Channel(s) Monitoring With Email Alerts



User Manual: Channel(s) Monitoring with Email Alerts

Version 1.0

| | Editor | Verifier |
|----------------|----------------------|----------------------|
| Name | Dave Dufour | Cyril Gambini |
| Company | Neosoft Technologies | Neosoft Technologies |



User Manual : Channel(s) Monitoring With Email Alerts



Confidentiality

This document prepared for the plugin users contains proprietary material and confidential information at Neosoft Technologies. Plugin users agree to treat this information confidentially and not disclose it to a third party.

Neosoft Technologies Inc.
1009 Route de l'Église, Suite 405
Québec, QC G1V 3V7

Neosoft Technologies Inc.
4800 rue de Rouen, Suite 230
Montréal, QC H1V 3T4

Toll-free: 1-866-636-7381
Tel : (418) 948-8324
Fax : (418) 948-8325

<https://www.neosoft.ca/en/home/>



HISTORY

| Doc Version | Date | Author | Modification |
|--------------------|-------------|---------------|--------------------------|
| 1.0 | 30/09/2019 | Dave Dufour | Creation of the document |
| 1.1 | 30/10/2019 | Dave Dufour | Revision of the document |
| | | | |
| | | | |



CONTENTS

| | |
|--|-----------|
| Purpose of this document | 5 |
| 1 Software dependencies | 5 |
| 2 Description of the plugin | 6 |
| 2.1 The Plugin in FlexLogger..... | 6 |
| 2.2 How to use the plugin | 7 |
| 2.2.1 Configuration of the plugin | 7 |
| 2.2.2 Commands..... | 9 |
| 2.3 Complete Example..... | 10 |
| 3 Detailed Plugin Features | 12 |
| 3.1 Sampling Rate..... | 12 |
| 3.2 Threshold | 12 |
| 3.3 Changing channel(s) | 12 |
| 3.4 Monitor channel(s) of different units..... | 12 |
| 3.5 Monitor more than one channel | 13 |
| 3.6 Monitor channels with different threshold..... | 13 |
| 4 Troubleshooting | 14 |
| 4.1 Errors list | 14 |
| 4.1.1 User can't see the licensing type when the plugin is loaded. 14 | |
| 4.1.2 User can't enter the parameters when the plugin is loaded.. 14 | |
| 4.1.3 Plugin doesn't send email when it should, and an explanation mark appear..... | 14 |
| 4.1.4 User can't press on "Test Parameters" when in the "Test Email" window | 14 |
| 4.2 Neosoft support..... | 14 |



Purpose of this document

The purpose of this document is to describe the functioning of the developed plugin. This manual will explain how, through the application, prepare, configure, parameterize, visualize, exploit a test.

1 Software dependencies

To be able to use the plugin, it is required to use FlexLogger 2019 R4 or newer.

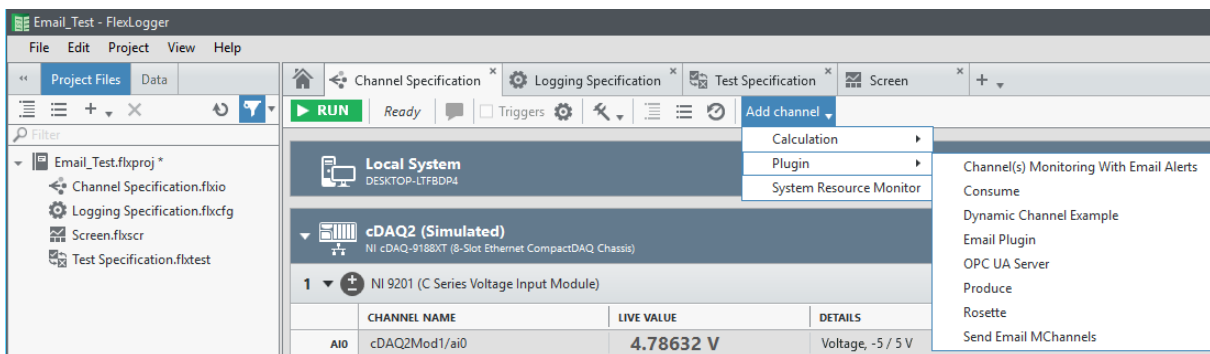


2 Description of the plugin

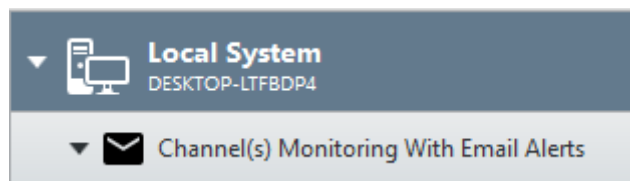
This plugin can be used to monitor one or multiple channels and then, send an email to one or more recipients if one of the selected channels reach a predetermined threshold.

2.1 The Plugin in FlexLogger

First of all, you have to create a new project, or you can open an existing one. After that, you need to click on "Add channel" -> Plugin -> Channel(s) Monitoring with Email Alerts



Once you have selected the plugin, you will be able to see it in FlexLogger.





2.2 How to use the plugin

This section will describe how to use the plugin and send email based on a defined threshold.

2.2.1 Configuration of the plugin

To monitor one or more channels, just click on the gear icon located beside the bin, at the right of the plugin display.

Configure: Channel(s) Monitoring With Email Alerts

Name
Channel(s) Monitoring With Email Alerts

Sender's Email Address

SMTP

Port
587

Use Secure Connection

Username

Password

Email Recipient

Subject

Message
An alarm have been detected at {times} on channel {channel}. The value was equal to {value} and the threshold was {threshold}

Channel(s) to Monitor
Unmapped

Threshold Type
Greater Than

Alarm Threshold
0

OK Cancel

Here is a description of the different parameters of the window.

Name: It is possible to rename the plugin section so the user can add the plugin more than one time in the project and rename the different instances according to what they are used for.

Sender's Email Address: The email that will be used to send a message when a threshold has been triggered.

SMTP: Address of the SMTP server used.
Example: smtp.office365.com

Port: Port of the SMTP server.
Example: 587



User Manual : Channel(s) Monitoring With Email Alerts



Use Secure Connection: If the sender account uses a password or not. In most cases, let it check.

Username: Correspond to the Sender's Email Address.

Password: Password of the email account that will send the email. ***Note that for now, Flexlogger doesn't permit to hide passwords***

Email's Recipient(s): Email address to which the email will be sent. It is possible to send the email to more than one address. If there is more than one address, they have to be separated by a comma.

Example: email01@mail.com, email02@gmail.com

Subject: Subject of the email.

Message: Message of the email. The message per default use 4 parameters that the user can put anywhere in a custom message and decide the format.

{times} = The time when the trigger occurred

{channel} = Name of the channel that went over or under the threshold

{value} = Value recorded by Flexlogger when the plugin detected the trigger

{unit} = Unit corresponding to the data monitored

{threshold} = Value of the threshold

Example: An alarm has been detected at {times} on channel {channel}.
The value was equal to {value} {unit} and the threshold was {threshold}{unit}

Channel(s) to Monitor: The user can select the channel(s) to monitor

Threshold Type: The user can select when an email will be sent. Two choices are possible. Greater or less than a value.

Alarm Threshold: It is the value that will trigger the alarm and the email sender.

Once all the parameters have been entered, the plugin will start to monitor the selected channel(s) and if one or more of them reach the threshold, an email will be sent to the email recipient. If the recorded value of the channel stays over the threshold, not another email will be sent. For the plugin to send another email, the channel(s) has to return under the threshold first.

Also, there will be an additional channel named Email Sent. This channel tracks the number of times a trigger activated how many times an email has been sent.

The counter won't restart if the selected channel(s) change. To restart the counter, the plugin will have to be reloaded.



User Manual : Channel(s) Monitoring With Email Alerts



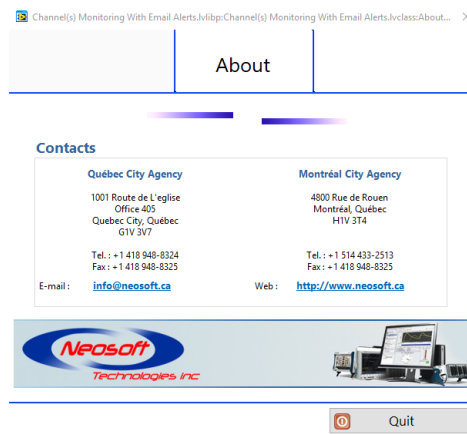
| Local System DESKTOP-LTFBDP4 | | | |
|---|-------------------------|------------|--|
| Channel(s) Monitoring With Email Alerts (cDAQ2Mod1/ai0) | | | |
| | CHANNEL NAME | LIVE VALUE | DETAILS |
| R 1 | cDAQ2Mod1/ai0 Republish | 4.89377 | |
| Email... | Count | 0.00000 | Usage: Show how many emails have been sent |

To stop using the plugin, the user only has to press on the bin icon, located beside the gear (settings) icon.

2.2.2 Commands

This section will describe the use of two commands buttons.

About: This button is used to show the information about the creators of the plugin



Test Email: The Test Email button can be used to test the different parameters chosen using the gear (Settings) icon. By doing that, it is possible to validate that an email will be sent without errors when there will be a trigger detected.



2.3 Complete Example

- 1) Open FlexLogger
- 2) Add channel(s) in FlexLogger

| | CHANNEL NAME | LIVE VALUE | DETAILS |
|-----|---------------|-------------|--------------------------|
| AI0 | cDAQ2Mod1/ai0 | -0.58608 V | Voltage, -5 / 5 V |
| AI1 | cDAQ2Mod1/ai1 | -0.40537 g | Acceleration, -10 / 10 g |
| AI2 | cDAQ2Mod1/ai2 | 0.10745 g | Acceleration, -10 / 10 g |
| AI3 | cDAQ2Mod1/ai3 | 1.05495 N m | Torque, -10 / 10 N m |
| AI4 | cDAQ2Mod1/ai4 | 2.15385 N m | Torque, -10 / 10 N m |
| AI5 | | | Not Configured |
| AI6 | | | Not Configured |
| AI7 | | | Not Configured |

- 3) Load the plugin "Channel(s) to Monitor with Email Alerts"
- 4) Verify that the license is what it should be

| | CHANNEL NAME | LIVE VALUE |
|---------|--------------|------------|
| License | Activated | --,--- |

- 5) Press on the gear (settings) icon
- 6) Enter the parameters. In this case, only one channel is chosen with a threshold greater than 3.

| | CHANNEL NAME | LIVE VALUE | DETAILS |
|----------|-------------------------|------------|--|
| R1 | cDAQ2Mod1/ai0 Republish | -2.64713 | |
| Email... | Count | 0.00000 | Usage: Show how many emails have been sent |

No email sent because the value is below the threshold of 3.

| | CHANNEL NAME | LIVE VALUE | DETAILS |
|----------|-------------------------|------------|--|
| R1 | cDAQ2Mod1/ai0 Republish | 1.68010 | |
| Email... | Count | 8.00000 | Usage: Show how many emails have been sent |

After a couple minutes, we can see the threshold has been reached 8 times.



User Manual : Channel(s) Monitoring With Email Alerts



| Local System DESKTOP-LTFBDP4 | | | |
|---|-------------------------|-----------------|--|
| Channel(s) Monitoring With Email Alerts (cDAQ2Mod1/ai0) | | | |
| | CHANNEL NAME | LIVE VALUE | DETAILS |
| R1 | cDAQ2Mod1/ai0 Republish | -4.11233 | |
| Email... | Count | 9.00000 | Usage: Show how many emails have been sent |

The channel went over 3, so now 9 emails has been sent

| Local System DESKTOP-LTFBDP4 | | | |
|---|-------------------------|----------------|--|
| Channel(s) Monitoring With Email Alerts (cDAQ2Mod1/ai0) | | | |
| | CHANNEL NAME | LIVE VALUE | DETAILS |
| R1 | cDAQ2Mod1/ai0 Republish | 4.74237 | |
| Email... | Count | 10.0000 | Usage: Show how many emails have been sent |

The channel went over 3 again, so a 10th email has been sent.

The message sent was the default one:

An alarm has been detected at 2019-11-01 4:57:41 PM on channel cDAQ2Mod1/ai0. The value was equal to 3.028083 V and the threshold was 3.000000V.

It is possible to see and confirm that the plugin only sent 1 email and it was when the value of the channel being monitored was of 3.02V.



3 Detailed Plugin Features

This section will give more detail about using the plugin features.

3.1 Sampling Rate

The plugin resamples the channel(s) to 100Hz. Be cautious that the plugin can miss a peak while monitoring.

3.2 Threshold

It is recommended that the user monitor the channel(s) for a small period of time after selecting the parameters, because if the signal oscillates around the threshold, it is possible that a large amount of emails will be sent. By doing that, the user will be able to see if the threshold value is good or if it needs to be modified.

3.3 Changing channel(s)

The plugin permit to change the channel(s) to monitor when live. So, it is possible to monitor 1 channel and change it to 5 after. It is also possible to modify the threshold type and the value of the threshold while executing.

3.4 Monitor channel(s) of different units

If the user wants to monitor multiple channels of different unit, he can add the plugin as many times as he wants.

| ▼ Channel(s) Monitoring With Email Alerts | | |
|--|--------------|------------|
| | CHANNEL NAME | LIVE VALUE |
| License | Activated | ---,--- |
| ▼ Channel(s) Monitoring With Email Alerts2 | | |
| | CHANNEL NAME | LIVE VALUE |
| License | Activated_1 | ---,--- |



User Manual : Channel(s) Monitoring With Email Alerts



| ▼ Channel(s) Monitoring With Email Alerts2 (cDAQ2Mod1/ai0) | | | |
|--|-------------------------|---------------------|--|
| | CHANNEL NAME | LIVE VALUE | DETAILS |
| R1 | cDAQ2Mod1/ai0 Republish | 2.19780 | |
| Email... | Count | 3.00000 | Usage: Show how many emails have been sent |
| ▼ Channel(s) Monitoring With Email Alerts (cDAQ2Mod1/ai1) | | | |
| | CHANNEL NAME | LIVE VALUE | DETAILS |
| R1 | cDAQ2Mod1/ai1 Republish | 3.21368 | |
| Email... | Count_1 | 1.00000 | Usage: Show how many emails have been sent |
| ▼ cDAQ2 (Simulated) NI cDAQ-9188XT (8-Slot Ethernet CompactDAQ Chassis) | | | |
| 1 ▼ NI 9201 (C Series Voltage Input Module) | | | |
| | CHANNEL NAME | LIVE VALUE | DETAILS |
| AI0 | cDAQ2Mod1/ai0 | 1.64591 V | Voltage, -5 / 5 V |
| AI1 | cDAQ2Mod1/ai1 | 2.47619 g | Acceleration, -10 / 10 g |
| AI2 | cDAQ2Mod1/ai2 | 1.55311 g | Acceleration, -10 / 10 g |
| AI3 | cDAQ2Mod1/ai3 | 0.81563 N m | Torque, -10 / 10 N m |
| AI4 | cDAQ2Mod1/ai4 | -0.29304 N m | Torque, -10 / 10 N m |

3.5 Monitor more than one channel

It is possible to monitor more than one channel using this plugin. Be sure all selected channels need the same threshold and the same unit. Also, one email will be sent by achannel. If you check the next screenshot, it is possible that the plugin will send 5 emails at the same time.

| ▼ Channel(s) Monitoring With Email Alerts2 (cDAQ2Mod1/ai0, cDAQ2Mod1/ai1, cDAQ2Mod1/ai2, cDAQ2Mod1/ai3, cDAQ2Mod1/ai4) | | | |
|--|-------------------------|-----------------|--|
| | CHANNEL NAME | LIVE VALUE | DETAILS |
| R1 | cDAQ2Mod1/ai0 Republish | -3.06716 | |
| R2 | cDAQ2Mod1/ai1 Republish | -5.49472 | |
| R3 | cDAQ2Mod1/ai2 Republish | -4.78213 | |
| R4 | cDAQ2Mod1/ai3 Republish | -4.15095 | |
| R5 | cDAQ2Mod1/ai4 Republish | -3.38838 | |
| Email... | Count | 10.0000 | Usage: Show how many emails have been sent |

3.6 Monitor channels with different threshold

If the user needs to monitor multiple channels with different threshold, he can add the plugin the number of times he needs. Note that the parameters will need to be entered every time a need addition of the plugin is added in FlexLogger.



4 Troubleshooting

This section will describe some errors the user can get and how to solve them

4.1 Errors list

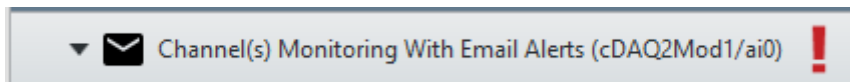
4.1.1 User can't see the licensing type when the plugin is loaded.

Solution: The first time the user loads the plugin, he should have to activate the license. If nothing appears, it is possible that the activation window appeared behind FlexLogger. Once the window is located, activate the license, restart FlexLogger and reload the plugin.

4.1.2 User can't enter the parameters when the plugin is loaded.

Solution: Verify that the plugin is activated. To see the status of the activation, refer to the what is in the channel name when the plugin is activated. The user should be able to see one of those option: Activated, Evaluation, Unlicensed or Error.

4.1.3 Plugin doesn't send email when it should, and an explanation mark appear.



Solution: Verify that the parameters used to send the email are valid. You can use the "Test Email" button to try the settings.

4.1.4 User can't press on "Test Parameters" when in the "Test Email" window

Solution: Verify that every control has something written. If "Use Secure Connection" is not check, the user doesn't have to enter a username and a password.

4.2 Neosoft support

It is possible to contact Neosoft if support is necessary.

By phone: 1-514-433-2513
By Email: info@neosoft.ca